

Web Machine Interface

The VPN Solution



MONITOUCH

Web Machine Interface

"Web Machine Interface", the new acronym developed by Hakko Electronics, is the interface method by which multiple equipment or machines are linked by a host control system which is accessible and controllable on the web. It is the new concept which allows the users to get an enormous added value by the direct access to the web of their machines, plants and applications.

Database

SQL, My SQL
and others

V-Power Cloud

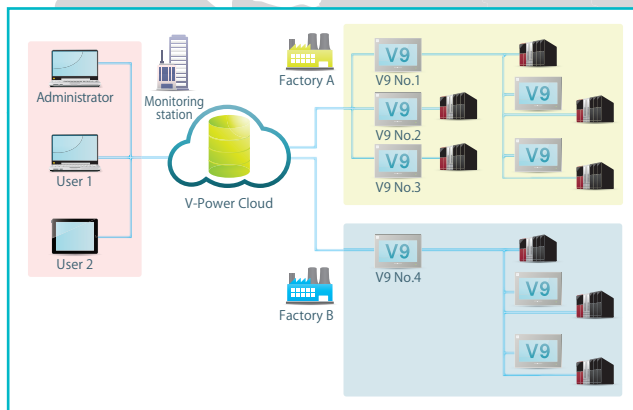


Monitoring Station

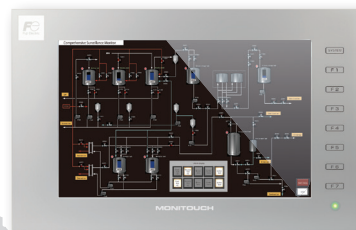


Factory
using WMI

Remote access to various devices



Easy access by daily devices



7" (wide)



10" (wide)

Remote monitoring, maintenance and teleservice

No more business trips are required when machines stop with failures or when customers ask for changing settings. With using the **VPN remote access service** and **VPN cloud data utilization service***, users are able to make maintenance as well as monitoring anywhere where there is internet. **coming soon*

MONITOUCH

Various Markets

HMI

Human Machine
Interface

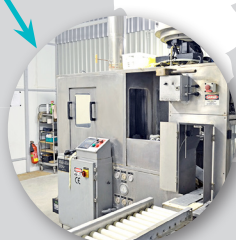
NEW

WMI

Web Machine
Interface

**A New Concept by
Hakko Electronics**

*We support your first step
to **"Smart Factory"***

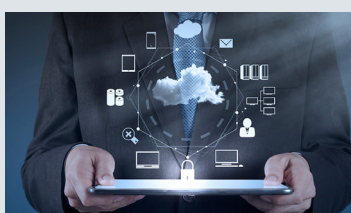


Factory
using WMI

Supporting the "Predictive Maintenance"

Thanks to the flexible accessibility to data and information, users are able to monitor the operational status of machines or equipment **easily at any time, anywhere**. It enables users to catch the sign of abnormalities or possible failures on their machines and plan countermeasures before it breaks down. This allows an easier maintenance and gives good service and reliability to the customer.

– Prevention is better than cure –





Available range of Monitouch V9 series (W/VPN)



7": V9070iWLD (wide)



10": V9100iWLD (wide)



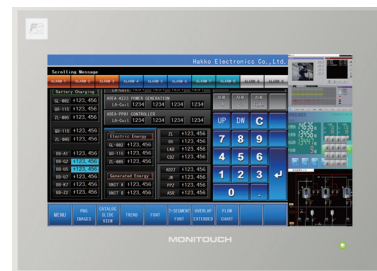
8": V9080iSLD



10.4": V9100iSLD



12": V9120iSLD



15": V9150iXLD

MONITOUCH

Headquarters Europe

Fuji Electric Europe GmbH
Goethering 58
63067 Offenbach am Main
Germany
info.inverter@fuji-electric-europe.com
www.fuji-electric-europe.com

Headquarters Japan

Hakko Electronics Co., Ltd.
Overseas Sales Department
890-1 Kamikashiwano-machi
Hakusan, Ishikawa 924-0035
Japan
www.monitouch.com

Distributor Italy

EFA Automazione
Via S. Aleramo 2
20063 Cernusco S/N MI
Italy
www.efa.it

FE Fuji Electric

© Fuji Electric Europe GmbH 2015

Information in this catalogue is subject to change without notice.